



# House & Land Package

Lot 362 & 363 Par Court, Pt Hughes (The Dunes)



## House & Land Pricing from \$387,730

### Inclusions:

#### Facade & Framing

- Vertical feature cladding to front of bed 1
- Smooth cladding to sides & rear
- Rendered Maxiwall to garage & portico
- 2700mm high ceilings
- Timber MGP10 wall & roof frames
- Colorbond corrugated iron roof sheets, gutters & fascias
- Dowell powdercoated aluminium sliding windows
- B&D Icon Automatic Panel Lift garage door
- Party wall between garages

#### Insulation (subject to energy assessment)

- R6.0 ceiling insulation
- R2.0 external insulation

#### Footings (subject to engineering)

- 300mm x 400mm external & internal beams, 32MPA concrete, trench mesh, 'S' type soil, F72 mesh

#### Plumbing

- Rheem 26L gas hot water unit
- 2x external taps

#### Concrete

- Concrete to front porch

#### Joinery/Finishes

- Primed pine 66mm skirtings & architraves
- Soft-close laminate cabinetry throughout
- Walk-in robe with single shelf & hanging rail

#### Painting

- Three coat internal paint application

#### Bathroom & Sanitaryware

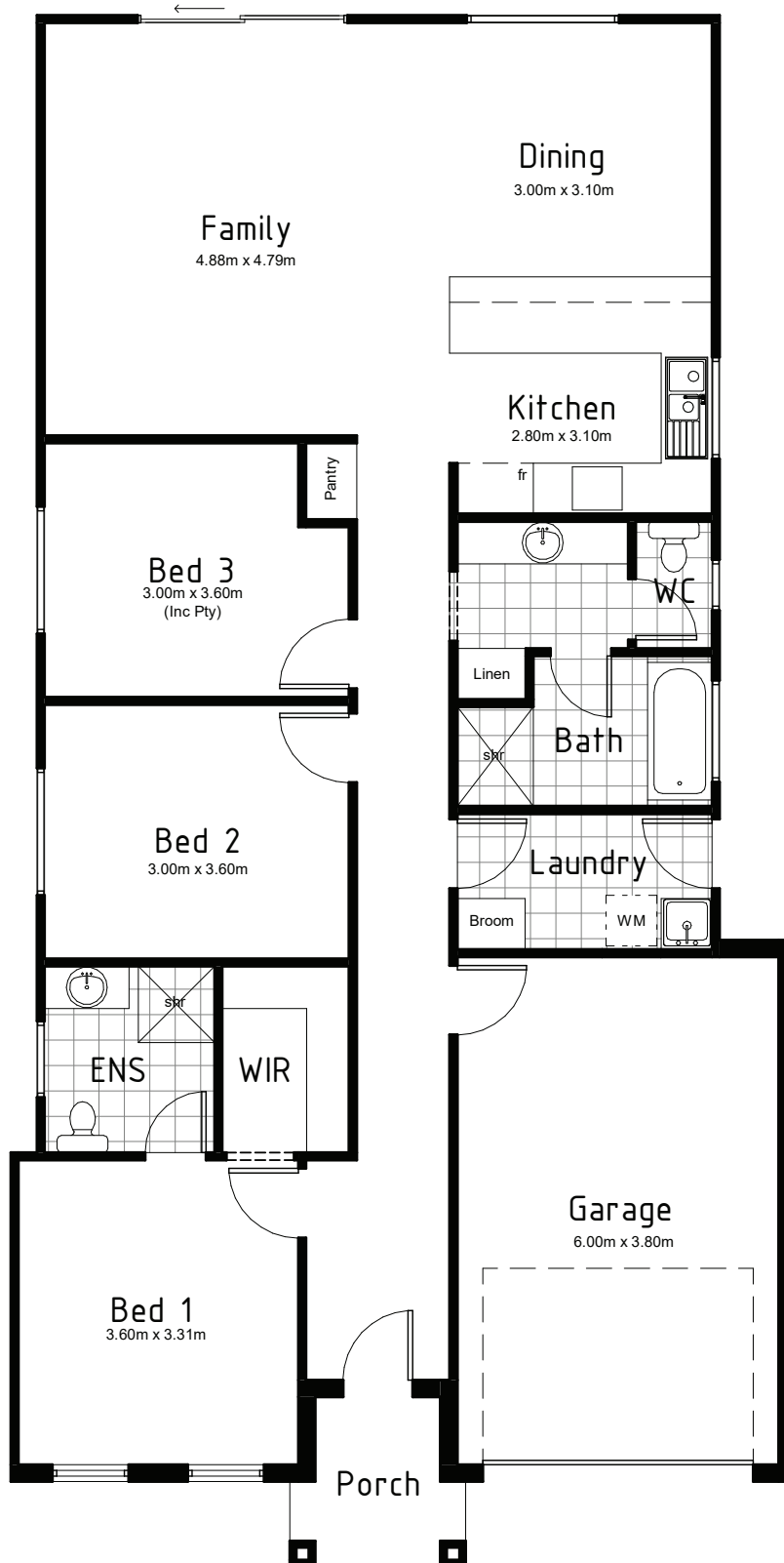
- Laminate vanity unit with Oliveri basin & tapware
- Oliveri chrome tapware & accessories
- 1510mm acrylic inset bath
- Framed showerscreens
- 850mm high mirror to vanities

#### Kitchen

- 900mm high laminate cabinetry
- Euro 60cm oven, electric cooktop & rangehood
- 1 & 3/4 bowl sink with gooseneck mixer tap
- 2400mm high pantry

#### Laundry

- 45L laundry tub & galvanised steel cabinet
- Pull-out gooseneck mixer tap
- 2400mm high broom cupboard



Images are for illustrative purposes only

Country Living Homes  
 3-4 Blanche Terrace, Moonta  
 Phone: 1300 805 505  
[www.countrylivinghomes.com.au](http://www.countrylivinghomes.com.au)

