



The Harvey

21 Paltridge Avenue, Stirling North



House & Land Pricing from \$359,030

Inclusions:

Facade & Framing

- BGC Duragroove Smooth 150mm cladding to front of bed 1
- Rendered & painted Maxiwall to front of porch & garage
- Smooth cladding to remainder
- 2700mm high ceilings
- Timber MGP10 wall & roof frames
- Colorbond corrugated iron roof sheets, gutters & fascias
- Dowell powdercoated aluminium sliding windows
- B&D Automatic Panel Lift garage door

Insulation (subject to energy assessment)

- R6.0 ceiling insulation
- R2.0 internal & external insulation

Footings (subject to engineering)

- 300mm x 400mm external & internal beams, 20MPa concrete, trench mesh, 'S' type soil, F72 mesh

Plumbing

- Rheem 26L instantaneous gas hot water unit
- 2x external taps

Joinery/Finishes

- Primed pine 66mm skirtings & architraves
- Soft-close laminate cabinetry throughout
- Walk-in robe with single shelf & hanging rail
- 2400mm high linen & broom cupboards

Painting

- Three coat internal paint application

Bathroom & Sanitaryware

- Laminate vanity unit with Oliveri basin & tapware
- Oliveri chrome tapware & accessories
- 1510mm acrylic bath
- Framed showerscreen

Kitchen

- 900mm high laminate cabinetry
- Euro 60cm oven, electric cooktop & rangehood
- 1 & 3/4 bowl sink with gooseneck mixer tap
- 2400mm high pantry

Laundry

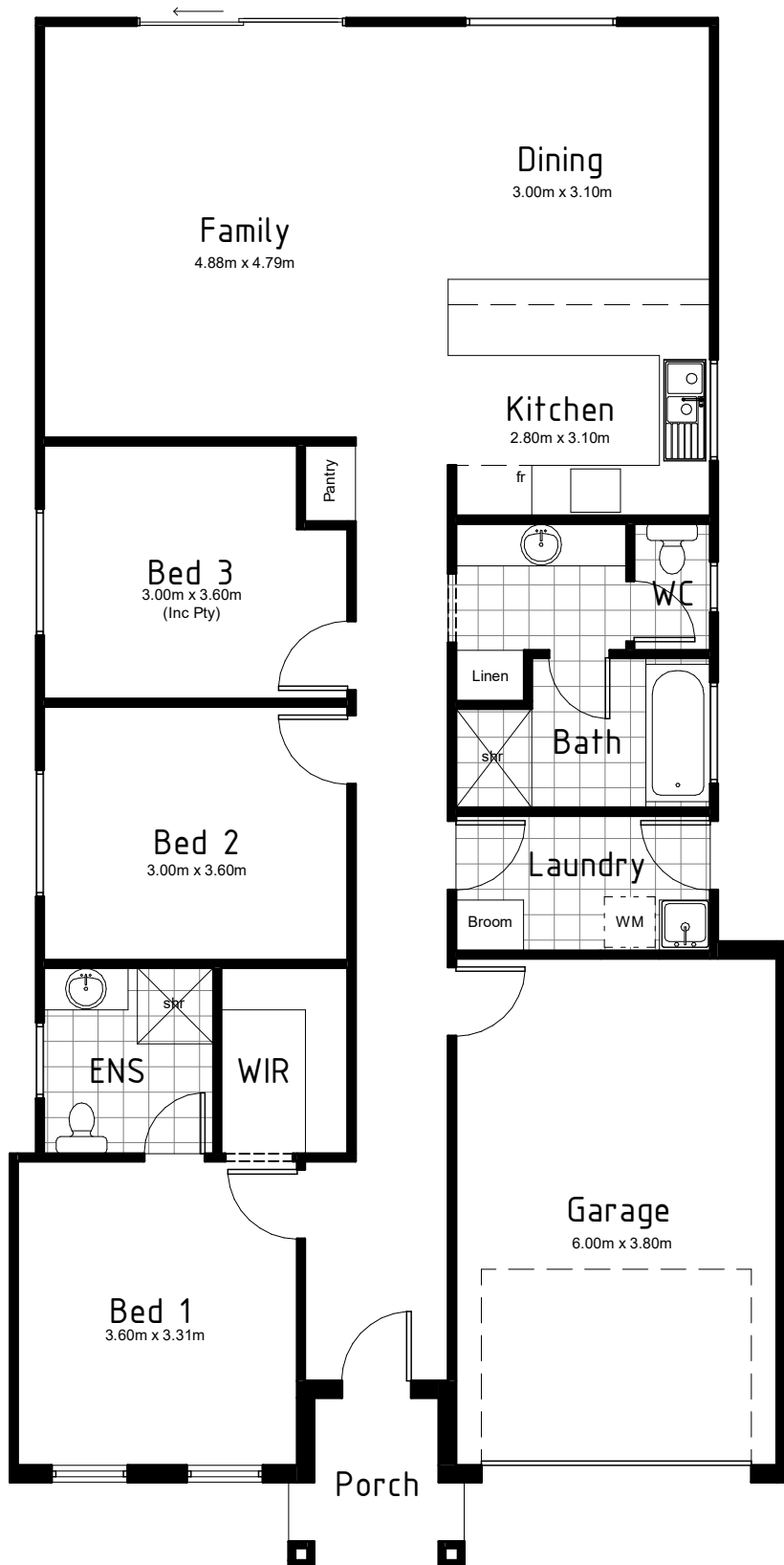
- 45L laundry tub & galvanised steel cabinet

Concrete

- Concrete to front porch

Wastewater

- \$9000 PS Sum for wastewater - subject to engineering



AREA:	
LIVING:	120.12
GARAGE:	25.18
PORCH:	3.56
TOTAL:	148.86m ²
LENGTH:	18.33m
WIDTH:	9.28m

Images are for illustrative purposes only

Country Living Homes
 3-4 Blanche Terrace, Moonta
 Phone: 1300 805 505
www.countrylivinghomes.com.au

